

Fixed-Bed Reactor Modeling and Simulation with e-Learning Tools

Margarida J. Quina¹, A. Cristina Almeida-Costa², Rosa M. Quinta-Ferreira¹

Abstract - Fixed-bed reactors (FBR) are largely used in industrial catalytic processes requiring a careful understanding at the undergraduate level of Chemical Engineering. Several mathematical models are available to represent the behavior of such heterogeneous systems with various degrees of complexity, including different transfer mechanisms at the fluid level or inside the catalyst particles. This will permit the application of the fundamental concepts of the transport mechanisms previously learned by the students in the first years of the course. One-dimension and two dimension models with or without dispersion effects in the axial and radial directions may lead to transient and steady state models, while the heterogeneity of the system can be simplified by assuming a pseudo-homogeneous behavior, which neglects inter and intraparticle resistances. Regarding the most complete heterogeneous models accounting for external and internal mass and thermal gradients, the behavior of the catalyst particles is fundamental to follow the multiscale characteristics of such systems. This, is in agreement with the “New Frontiers in Chemical Engineering Education” that claim systems teaching embracing the understanding of the physical and chemical phenomena in a broad scale. In this context, several intraparticle models including diffusional and convective transports can be developed and integrated in the global model of the fixed bed reactor. The different mathematical models are represented by partial or ordinary differential equations associated to algebraic expressions, requiring numerical solutions through various computational codes. Therefore, the great interest associated to the teaching of these industrial systems is frequently inhibited by their complexity, so that modern tools based on e-learning methodologies will be much welcome. In this context, the global objective of the present work addresses the construction of a platform for visualizing the general behavior of fixed-beds involving reactants and products profiles and thermal gradients as well.

Index Terms - Chemical Processes, E-learning, Fixed-bed reactors, Modeling.

INTRODUCTION

The industrial chemical processes convert raw materials in products, and the reactor is often considered as the “heart” of the plant. The selection and design of the reaction units are essential for the economic success of a chemical industry, imposing final yields and conversions. The Chemical

Reaction Engineering is then an area of Chemical Engineering with a significant role, and our main goal focus on the development of e-learning tools in the domain of heterogeneous processes, specifically fixed-bed reactors (FBR). This work addresses catalytic reactional systems with particular emphasis in fixed-bed reactors that are largely used in industry. These processes may be studied through diverse mathematical models: pseudo-homogeneous and heterogeneous models in steady state or transient regimes [1-3]. For real systems, in general, no analytical solutions are available, and different numerical techniques are required for computational simulation. The ordinary differential equations, ODEs, and/or partial differential equations, PDES, may be solved by using various commercial Fortran codes: GEAR, PDECOL, FORSIM, DDASAC, DASSL.

The analysis of the behavior of FBR is proposed in the e-learning platform in two levels:

- general analysis through different mathematic models, including the catalyst particle and the film resistances;
- two case studies involving the synthesis of phthalic anhydride and formaldehyde through partial oxidation of ortho-xylene and methanol, respectively.

In particular, the operation of these systems highlights the thermal instabilities that are possible to occur in such exothermic processes, namely temperature runaway and wrong way behavior, relevant for safety. The virtual platform allows the students to understand the effect of different operating conditions on the FBR behavior. Also, some complex theoretical concepts can be easily understood since the time consuming for mathematical calculations are almost instantaneous. The e-learning philosophy has then important advantages when compared with classical teaching, since is embedded into a web page permitting a broad dissemination of the behavior of industrial systems, often impossible to teach in conventional classes.

MATHEMATICAL MODELS

The behavior of fixed-bed reactors (FBR) may be studied by using several mathematical models, depending on the complexity that is taken into account for, and Figure 1 resumes the different possibilities. For example, PH1D model correspond to a pseudo-homogeneous approach in one dimension, and in this case the film and the particle are implicitly considered. In the case of heterogeneous models, the gradients in the film and in the catalyst may be taken into account (HT1D_d, HT1D_{dc}, HT2D_d, HT2D_{dc}). The model HT2D_d in transient conditions includes equations (1) to (12), indicated in Table 1, and corresponds to a complex approach for simulating the dynamic behavior of FBR.

¹ Chemical Engineering Department - University of Coimbra, guida@eq.uc.pt; rosaqf@eq.uc.pt;

² Companhia Industrial e Resinas Sintéticas, Cires S.A, cristina.costa@cires.pt

TABLE 1

TWO DIMENSION DYNAMIC HETEROGENEOUS MODEL WITH DIFFUSIONAL TRANSPORT IN THE CATALYST (HT2DD)

Fluid phase in the reactor	
Mass balance to specie i :	$\varepsilon \frac{\partial C_{i,b}}{\partial t} = -\varepsilon u_i \frac{\partial C_{i,b}}{\partial z} + \varepsilon D_{ea} \frac{\partial^2 C_{i,b}}{\partial z^2} + \varepsilon D_{er} \left(\frac{\partial^2 C_{i,b}}{\partial r^2} + \frac{1}{r} \frac{\partial C_{i,b}}{\partial r} \right) + \bar{\eta}_i r_{i,b} \quad (1)$
Energy balance:	$\varepsilon \rho_f C p_f \frac{\partial T_b}{\partial t} = -\varepsilon u_i \rho_f C p_f \frac{\partial T_b}{\partial z} + \varepsilon \lambda_{ea} \frac{\partial^2 T_b}{\partial z^2} + \varepsilon \lambda_{er} \left(\frac{\partial^2 T_b}{\partial r^2} + \frac{1}{r} \frac{\partial T_b}{\partial r} \right) + \sum_j (-\Delta H_j) \bar{\eta}_j r_{j,b} \quad (2)$
Initial Conditions:	$\forall z, \forall r; t=0 \quad C_{i,b} = C_{i,b}^0; \quad T_b = T_b^0 \quad (3)$
Boundary Conditions:	
$\forall t, \forall r; z=0$	$\varepsilon u_i (C_{i,0} - C_{i,b}) = -\varepsilon D_{ea} \frac{\partial C_{i,b}}{\partial z} \Big _{z=0}; \quad \varepsilon u_i \rho_f C p_f (T_0 - T_b) = -\varepsilon \lambda_{ea} \frac{\partial T_b}{\partial z} \Big _{z=0} \quad (4)$
$\forall t, \forall r; z=L$	$\frac{\partial C_{i,b}}{\partial z} \Big _{z=L} = 0; \quad \frac{\partial T_b}{\partial z} \Big _{z=L} = 0$
$\forall t, \forall z; r=0$	$\frac{\partial C_{i,b}}{\partial r} \Big _{r=0} = 0; \quad \frac{\partial T_b}{\partial r} \Big _{r=0} = 0$
$\forall t, \forall z; R_0=0$	$\frac{\partial C_{i,b}}{\partial r} \Big _{r=R_0} = 0; \quad -\lambda_{er} \frac{\partial T_b}{\partial r} \Big _{r=R_0} = h_w (T_b - T_w) \quad (5)$
Fluid/solid interface	
Mass balance to specie i :	$k_{f,i} a_p (C_{i,s} - C_{i,b}) = r_{i,obs} \quad (6)$
Energy balance:	$h_f a_p (T_s - T_b) = \sum_j (-\Delta H_j) r_{j,obs} \quad (7)$
Catalyst particle	
Mass balance to specie i :	$\varepsilon_p \frac{\partial C_{i,p}}{\partial t} = D_{e,i} \left(\frac{\partial^2 C_{i,p}}{\partial r_p^2} + \frac{s}{r_p} \frac{\partial C_{i,p}}{\partial r_p} \right) + \sum_j \alpha_{i,j} r_{j,p} \quad (8)$
Energy balance:	$(\rho C p)_p \frac{\partial T_p}{\partial t} = \lambda_e \left(\frac{\partial^2 T_p}{\partial r_p^2} + \frac{s}{r_p} \frac{\partial T_p}{\partial r_p} \right) + \sum_j (-\Delta H_j) r_{j,p} \quad (9)$
Initial Conditions:	$\forall r_p; \forall z; t=0 \quad C_{i,p} = C_{i,p}^0; \quad T_p = T_p^0 \quad (10)$
Boundary conditions:	$\forall t, \forall z; r_p = R_p \quad C_{i,p} = C_{i,s}; \quad T_p = T_s$
	$\forall t, \forall z; r_p = 0 \quad \frac{\partial C_{i,p}}{\partial r_p} \Big _{r_p=0} = 0; \quad \frac{\partial T_p}{\partial r_p} \Big _{r_p=0} = 0 \quad (11)$
Effectiveness factor referred to bulk conditions	
	$\bar{\eta} = \frac{r_{obs}}{r(C_b, T_b)} = \frac{1}{V_p} \iiint_{V_p} r(C_p, T_p) dV_p \quad (12)$

shows the bulk temperature profiles and Figure 2(b) the o-xylene and phthalic anhydride dimensionless concentration profiles along the reactor axial coordinate for different values of the intraparticle mass Peclet number, λ_m , at the inlet conditions $T_0=625\text{K}$ and $P_0=0,01$ atm. The intraparticle and interfacial profiles of the dimensionless concentration of o-xylene and phthalic anhydride calculated at the reactor inlet ($z^*=0$) are also depicted in Figures 3.

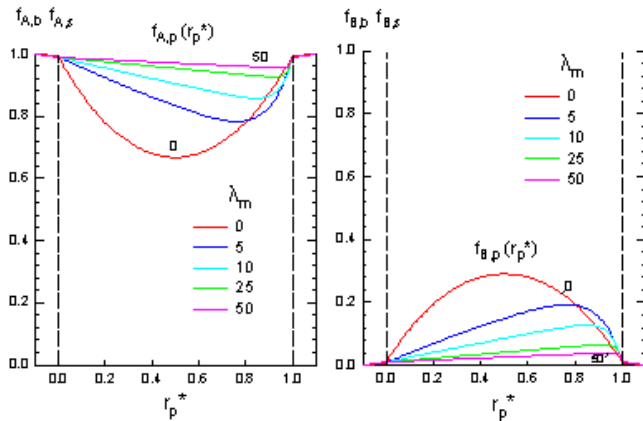


FIGURE 3
INTRAPARTICULAR AND INTERFACIAL DIMENSIONLESS CONCENTRATION PROFILES OF O-XYLENE (A) AND PHTHALIC ANHYDRIDE (B) AT THE REACTOR ENTRANCE ($Z^*=0$) FOR DIFFERENT VALUES OF λ_m ($T_0=T_W=625\text{K}$ AND $P_0=0,01$ ATM).

For chemical processes involving competitive reactions, yield and selectivity are very important parameters for the evaluation of the reactor efficiency. Figures 4 (a)-(b) show

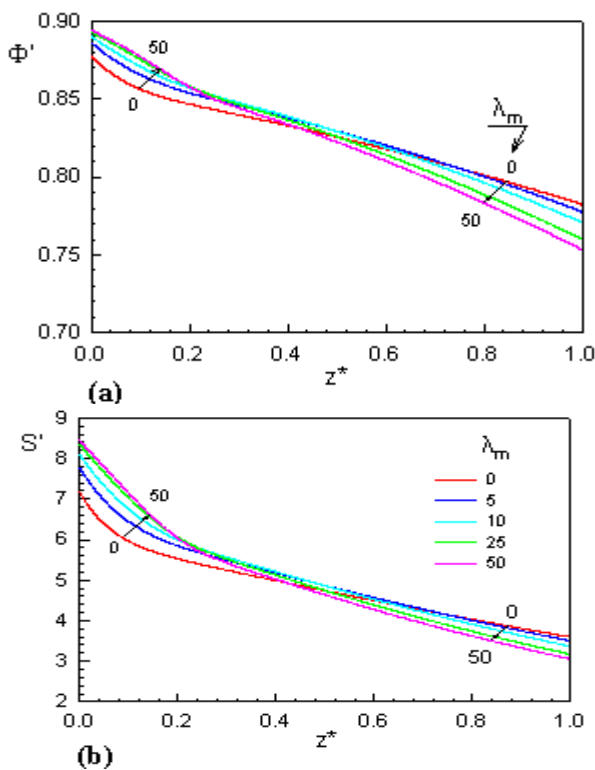


FIGURE 4
DIFFERENTIAL YIELD, Φ' , AND THE DIFFERENTIAL SELECTIVITY OF PHTHALIC ANHYDRIDE, S' , ALONG THE REACTOR AXIAL COORDINATE.

the evolution of the differential yield, Φ' , and the differential selectivity of phthalic anhydride, S' , along the reactor axial coordinate, calculated at the same conditions of Figure 2. The results indicated in Figures 2 to 4 are examples, which students may simulate interactively, being possible to change the operating conditions of the system. The effect of those changes is observable in graphical representations.

II. Case Study 2 – Synthesis of Formaldehyde

The system analyzed under this case study was the partial oxidation of the methanol to formaldehyde over iron/molybdenum oxides catalyst. The kinetic model involves two reactions: the partial oxidation of methanol to formaldehyde, which may be followed by a side reaction involving the partial oxidation of the formaldehyde to CO and H_2O . The kinetic model may be found in [10] and the operating conditions used by default correspond to the industrial ones (1.4 atm; 257°C ; 7.5% for feed methanol mole fraction). Although the industrial production of formaldehyde involve FBR with thousands of tubes, in the simulations only a single tube is considered with a length of 0.75 m and divided into two zones: 0.2 m of diluted catalyst with 50% inert in the first region (less active bed) and 0.55 m of pure catalyst. This distribution of the catalyst allows mild heat generation, and then lower hot spots are obtained. The e-learning platform allows the observation of:

- steady state profiles for concentrations and temperature, according to different mathematical models (PH1D, HT1D and HT2D). For heterogeneous models, the mass flux inside the particle may account for only diffusion (HT1D_d; HT2D_d) or both diffusion and convection (HT1D_{dc}; HT2D_{dc}).
- transient behavior of the reactor according PH1D, HT1D_d and HT1D_{dc}.

Figure 5 and 6 show as example, some axial profiles of temperature in the case of steady state conditions and for dynamic conditions, respectively.

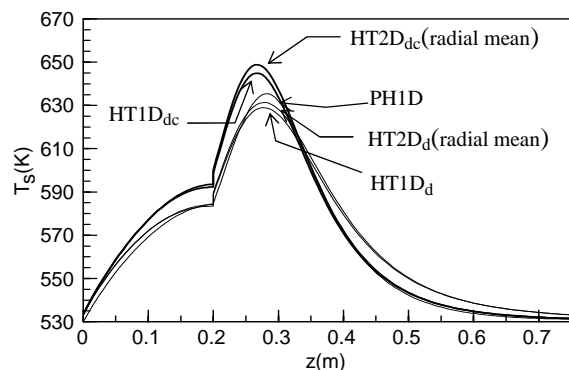
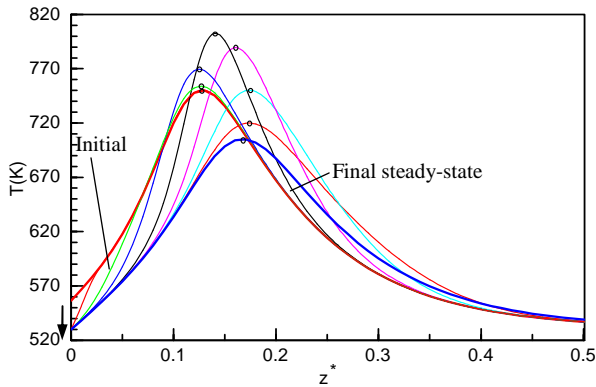
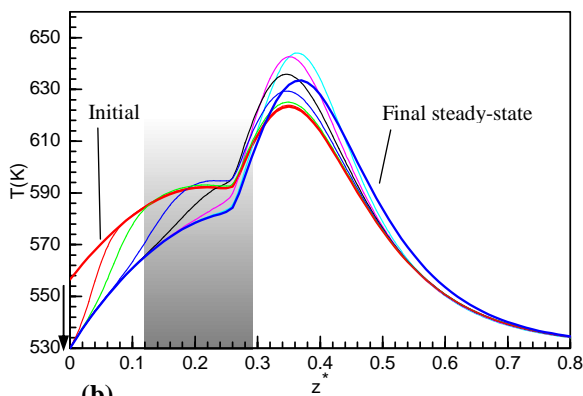


FIGURE 5
AXIAL SOLID TEMPERATURE PROFILES PREDICTED WITH DIFFERENT MATHEMATICAL MODELS: PH1D, HT1D_d, HT1D_{dc}, HT2D_d, HT2D_{dc}



(a)



(b)

FIGURE 6
TRANSIENT AXIAL TEMPERATURE PROFILES OBTAINED
WITH PH1DT MODEL FOR A FIXED BED PACKED WITH (a)
PURE CATALYST, (b) – DILUTED CATALYST, BY DECREASING
THE FEED TEMPERATURE -5% ($T_0=557 \rightarrow 530$ K).

These mathematical models are based on common assumptions: constant pressure in the reactor, constant values for physical and transport properties, constant wall temperature, constant bed porosity, flat radial velocity profiles (plug flow) and constant catalyst activity in each catalytic zone. The simulated mathematical equations may be found in [8] for the case of steady state and in [10] for transient conditions. The commercial code DDASAC package was used for solving the steady state [13-14], which is an extension of DASSL code, developed by Petzold [15]. The transient model was solved with the PDECOL [16]. The numerical solutions involve complex strategies which were discussed in detail elsewhere [11].

It is important to note that the dilution of the catalyst bed in the first part of the tubes has advantages concerning the parametric sensitivity and runaway behavior [9].

In this case study students may test the influence of several variables such as the operating conditions (concentration, temperature), the wall temperature, the inlet pressure, etc. In transient conditions, different changes may be virtually experimented (steps, ramps, etc.). Moreover, the influence of the dilution of the catalyst can be easily understood, mainly in thermal profiles, by simulating this important industrial process.

CONCLUSIONS

E-learning tools may be the key for the success of students to understand the behavior of FBR. In fact, due to the high complexity of the mathematical equations involved in the description of these systems, the classical approach for teaching this engineering subject sometimes fails, since only very simplified case studies may be solved in the classroom. Through simple computational simulations, made in a friendly web-based interface, the performance of a FBR is easily obtained for a given set of operation conditions. Moreover, the effect of changes in the operating conditions may also be straightforwardly understood, based on simple graphical representations of the system behavior.

To conclude, it is important to note that e-learning tools may lead to a reduction of the number of classical lectures, being students more independent, which is in accordance with the methodologies stated by the Bologna Process.

ACKNOWLEDGMENT

The authors acknowledge the financial support from POSC (Programa Operacional da Sociedade de Conhecimento, Portugal), contract 743/4.2/C/REG.

NOTATION

- a_p - specific particle area (m^{-1})
- C_i - concentration of species i (mol/m^3)
- C_0 - *o*-xylene feed concentration, (mol/m^3)
- C_p - heat capacity ($J/kg K$)
- D_e - effective diffusivity (m^2/s)
- d_p - particle diameter (m)
- f_i - dimensionless concentration of species i , C_i/C_0
- h_f - film heat transfer coefficient ($J/m^2 s K$)
- h_w - wall heat transfer coefficient ($J/m^2 s K$)
- k_{fi} - film mass transfer coefficient of species i (m/s)
- L - reactor length (m)
- r - reactor coordinate (m)
- r_j - rate of reaction j ($mol/s kg_{cat}$)
- $r_{obs,i}$ - observed reaction rate inside the catalyst ($mol/s kg_{cat}$)
- r_p - particle coordinate (m)
- R_p - half thickness of the catalyst particle (m)
- R_0 - tube radius of the reactor (m)
- s - catalyst shape factor (slab: $s=0$; cylinder: $s=1$; sphere: $s=2$)
- t^* - dimensionless time (t/τ)
- t - time (s)
- T - absolute temperature (K)
- T_0 - feed temperature (K)
- u_i - interstitial velocity (m/s)
- v_0 - intraparticle fluid velocity (m/s)
- z - reactor axial coordinate (m)
- z^* - dimensionless reactor axial coordinate (z/L)

Greek symbols

- $\alpha_{i,j}$ - stoichiometric coefficient of specie i , in the reaction j
- ΔH_j - enthalpy of reaction j (J/mol)
- ε - bed porosity
- λ_e - effective thermal conductivity ($J/m s K$)

η_j - effectiveness factor of reaction j
 ρ - density (kg/m^3)
 τ - space time for the fluid (L/u_i)

Subscripts

a- axial
b - bulk
f - fluid
i- chemical specie
j - reaction
p - particle
r - radial
s - particle surface
w - wall

REFERENCES

- [1] G. F. Froment, K.B. Bischoff, "Chemical reactor analysis and design", Wiley, 2nd ed., New York, 1990, pp. 664.
- [2] S. Fayo de Azevedo, M. Romero-Ogawa, A.P. Wardle, "Modelling of tubular fixed-bed catalytic reactors: a brief review", *Trans. IChemE*, 68A, pp. 483-502, 1990.
- [3] S. Pereira Duarte, G.F. Barreto, N. Lemcoff, "Comparison of twodimensional models for fixed bed catalytic reactors", *Chem. Eng. Sci.*, 39, pp. 1017-1024, 1984.
- [4] R.M. Quinta-Ferreira, A.C.A. Costa, A.E. Rodrigues, "Dynamic Behavior of Fixed-Bed Reactors with Large-Pore Catalysts - Bidimensional Heterogeneous Diffusion/Convection Model", *Comp. Chem. Eng.*, 16, 8, pp. 721-751, 1992.
- [5] C.A. Almeida-Costa, R.M. Quinta Ferreira, A.E. Rodrigues, "Wrong-Way Behavior in Fixed-Bed Reactors with Large-Pore Catalysts", *Chem. Eng. Sci.*, 49, pp. 5571-5583, 1994.
- [6] R.M. Quinta Ferreira, C.A. Almeida Costa, A.E. Rodrigues, "Effect of Intraparticle convection on the Transient Behaviour of Fixed-Bed Reactors: Finite Differences and Collocation Methods for Solving Unidimensional Models", *Comp. Chem. Eng.*, 20, pp. 1201-1225, 1996.
- [7] Almeida-Costa, A.C.A. Estudo do comportamento estacionário e dinâmico de reactores catalíticos de leito fixo com convecção intraparticular, PhD Thesis, University of Coimbra, 2005.
- [8] M.J. Quina, R.M. Quinta Ferreira, Model Comparison and Sensitivity Analysis for a Fixed Bed Reactor with Two Catalytic Zones, *Chem.Eng.J.*, 75, 3, pp. 149-159, 1999.
- [9] M.J. Quina, R.M. Quinta Ferreira, Thermal Runaway Conditions of a Partially Diluted Catalytic Reactor, *Ind.Eng.Chem.Res.*, 38, 12, pp. 4615-4623, 1999.
- [10] M.J. Quina, R.M. Quinta Ferreira, Start-Up and Wrong-Way Behaviour in a Tubular Reactor: Dilution Effect of the Catalytic Bed, *Chem.Eng.Sci.*, 55, 18, pp. 3885-3897, 2000.
- [11] M. J. Quina, R.M. Quinta Ferreira, Simulation of a Fixed Bed Reactor with Two Catalytic Zones: Numerical Methods, in *Proc. 2nd Meeting on Numerical Methods for Differential Equations*, Coimbra, 1998, pp. 447-456.
- [12] G.F. Froment, Fixed bed catalytic reactors: current design status. *Ind. Eng. Chem.*, 59, 18-27, 1967.
- [13] W.E. Stewart, M. Caracotsios, J.P. Sørensen, Software package documentation of DDASAC - *Double Precision Differential Algebraic Sensitivity Code*. University of Wisconsin-Madison, EUA., 1991.
- [14] M. Caracotsios, W.E. Stewart, Sensitivity analysis of initial value problems with ODEs and algebraic equations, *Comp. Chem. Eng.*, 94, pp. 359-365, 1985.
- [15] L.R. Petzold, Differential/algebraic equations are not ODEs, *Siam J. Sci. Stat. Comput.*, 3, pp. 367-385, 1982.
- [16] N. Madsen, R. Sincovec, "PDECOL: General collocation on finite elements", *Chem. Eng. Sci.*, 30, pp. 587-596, 1975.